

Materials

Components

 5 x 3 mm Magnets

Filaments I Used

 Light Oak Wood

 Dark Walnut Wood

 Teak Wood

 Need Help? Ask questions on discord



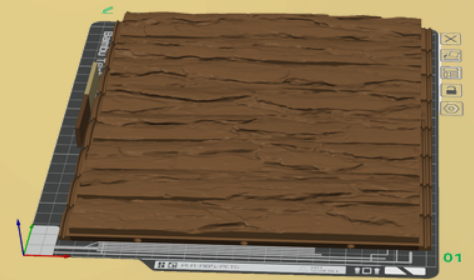
Forest Chess Set



PRINT INSTRUCTIONS

Print in Place Chess Board

- *Enable Normal Supports.*
Threshold angle 15 degrees
- *Add print stop at layer 21 to add magnets*
- *Paint as desired*



Did You Know?

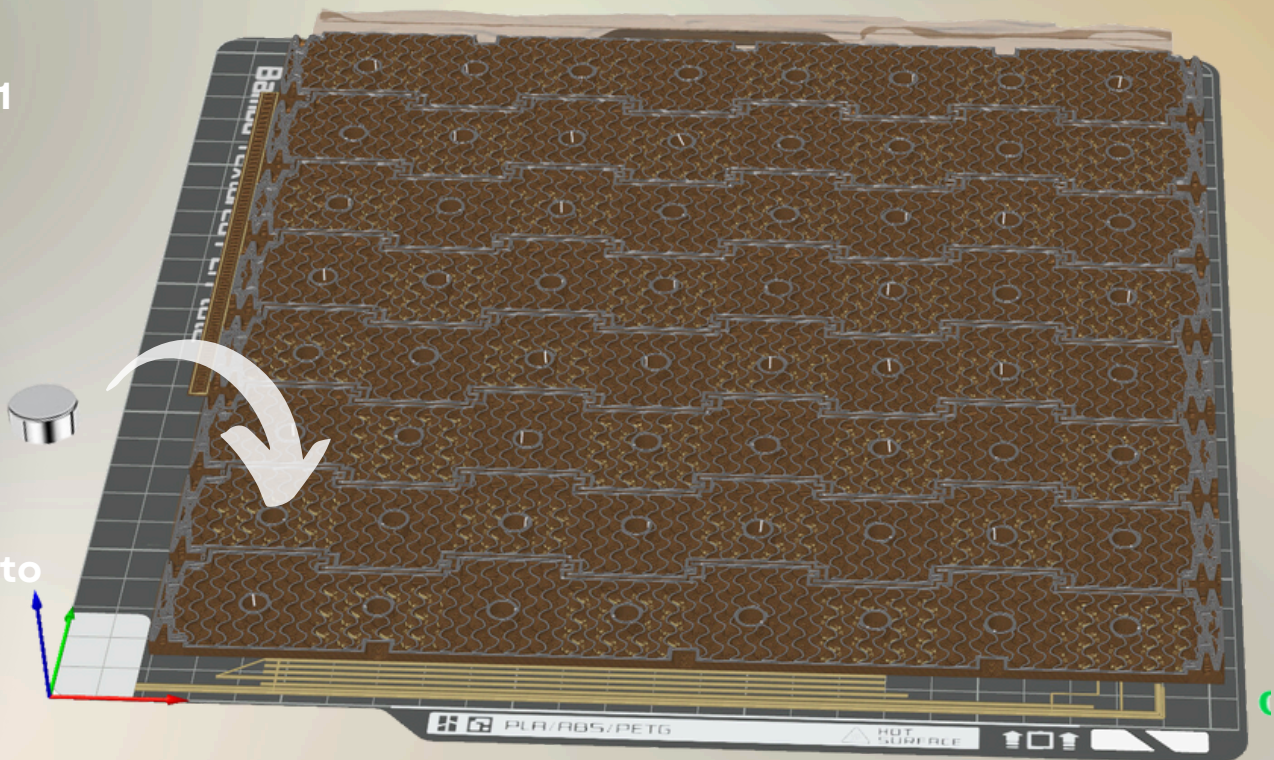
You can skip these steps by using the Easy Print 3mf File

****Special Prime Tower Settings****

Set width to 3 mm
Brim width to 1 mm

****Add 64 magnets to board NOW****

Pay Attention to polarity!



PRINT INSTRUCTIONS

End Caps (For either board)

- ***Use Arachne Wall Generator***
- ***Concentric Bottom Surface Pattern***
- ***Paint as Desired***



PRINT INSTRUCTIONS

(ASSEMBLY BOARD ONLY) Board Pieces

- Paint normal supports on bottom edge of chess board slats (use the fill bucket)



Tool type

On overhangs only

Smart fill angle 30.00

Highlight overhang areas 0.00

Section view 0.00

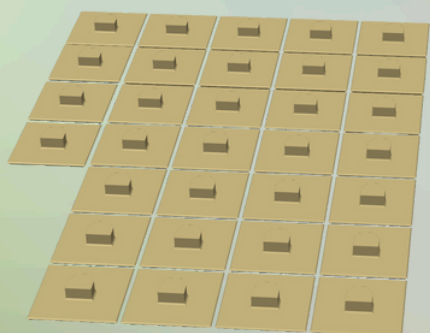


Bucket Paint

PRINT INSTRUCTIONS

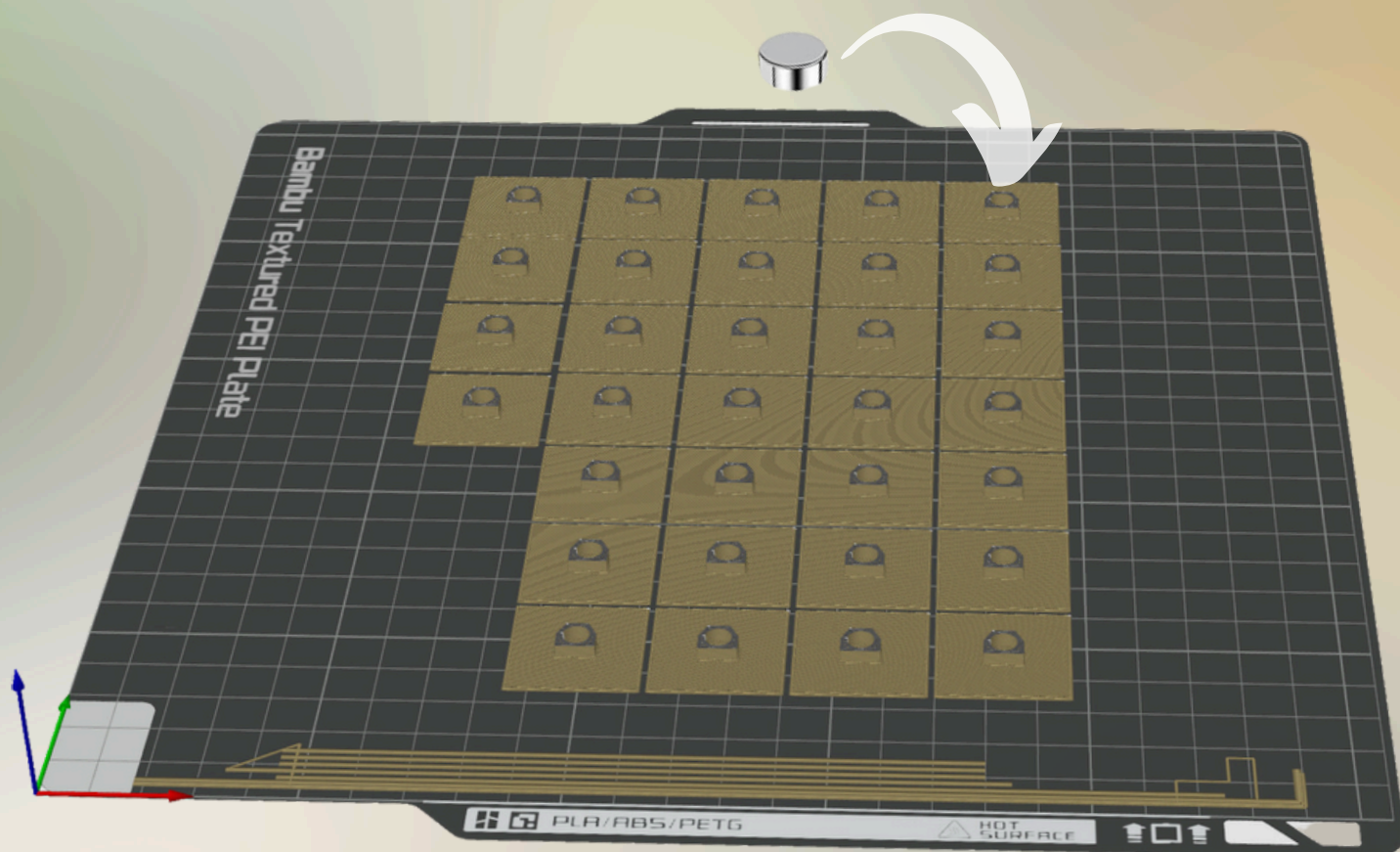
(ASSEMBLY BOARD ONLY) Tiles

- Use stock settings
- add a print stop at layer 23 to add magnets



****Add 32 magnets now****

Pay attention to polarity!



PRINT INSTRUCTIONS

Chess & Checkers Pieces

- *Set Layer Height to 0.08 mm*
- *Add print pause at layer 51*
- *Print two sets. One light and one dark*



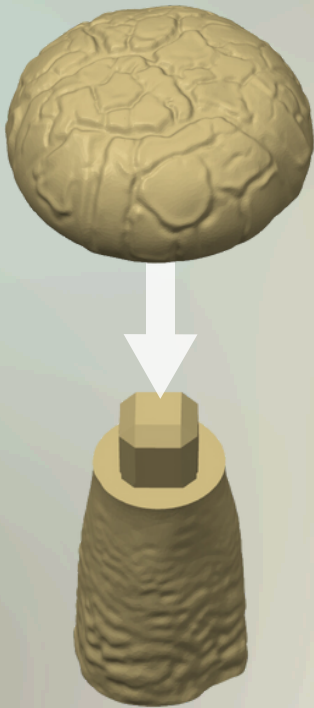
****Add 16 magnets now****

Pay attention to polarity
it needs to stick to
the chess board
tiles!

ASSEMBLY INSTRUCTIONS

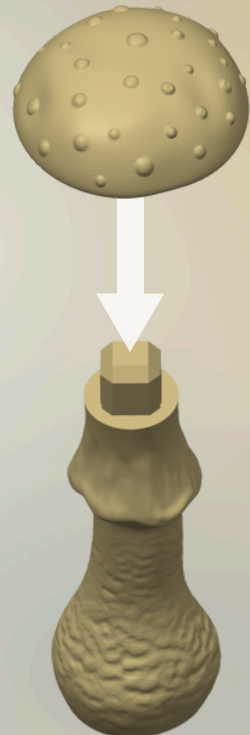
1

*Assemble two rooks for each set.
Add glue if necessary.*



Assemble a Queen for
Each Set. Add glue if
necessary

2



If you are assembling the
print in place board you
can skip to the end :)

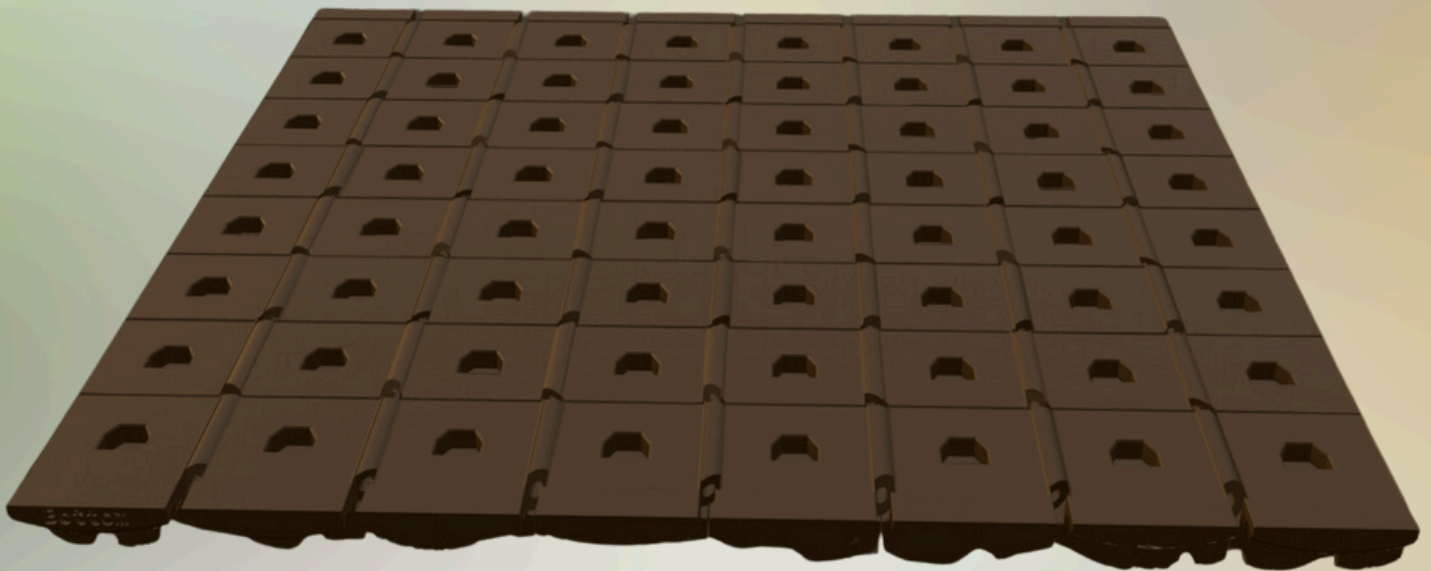
ASSEMBLY INSTRUCTIONS

3

Put together vertical slats of assembly board

Arrange the board by the numbers on the top

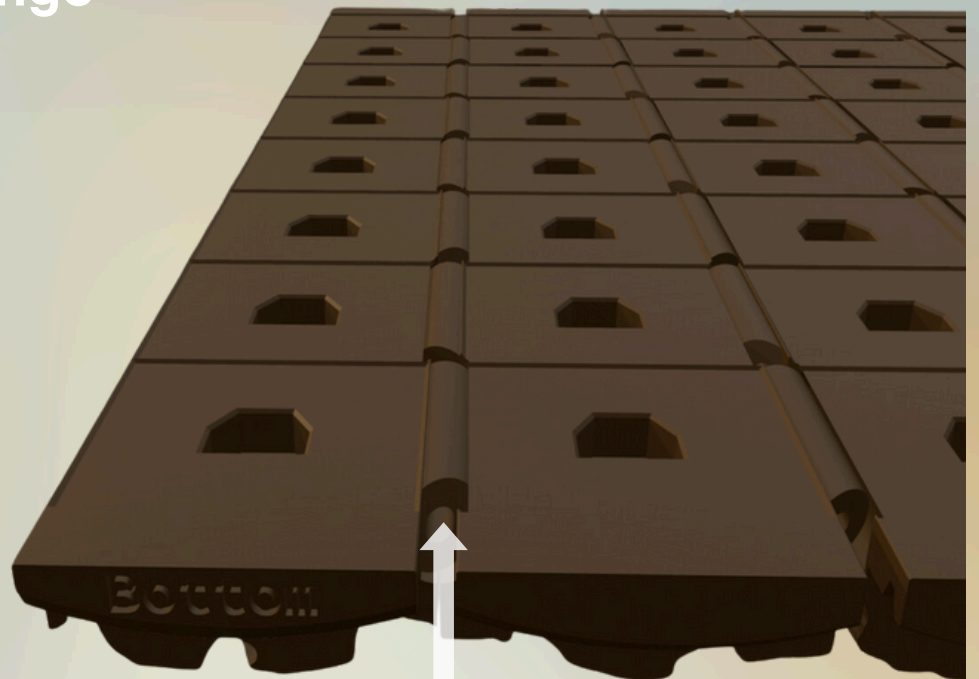
1 2 3 4 5 6 7 8



ASSEMBLY INSTRUCTIONS

4

Cut lengths of filament off a spool and push through each hinge

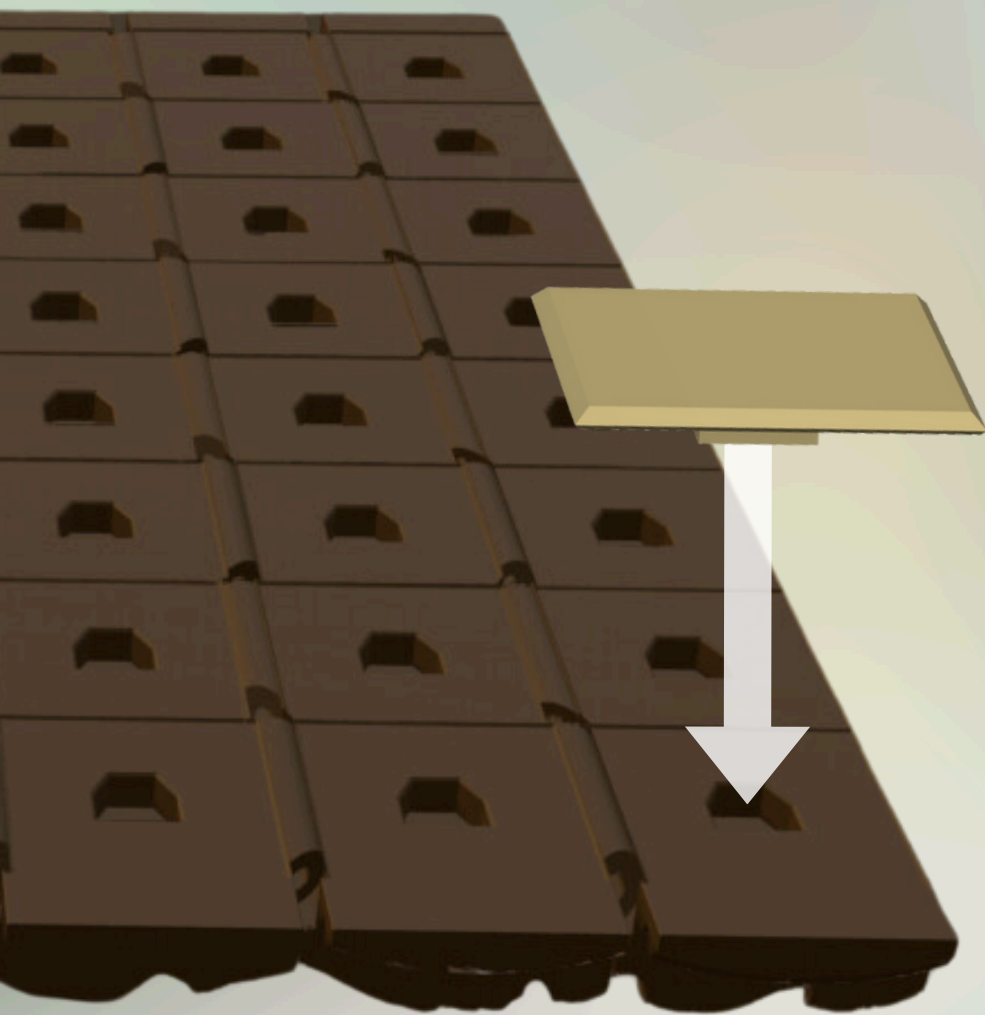


Tip: Rotate the filament as it goes through each hinge.

ASSEMBLY INSTRUCTIONS

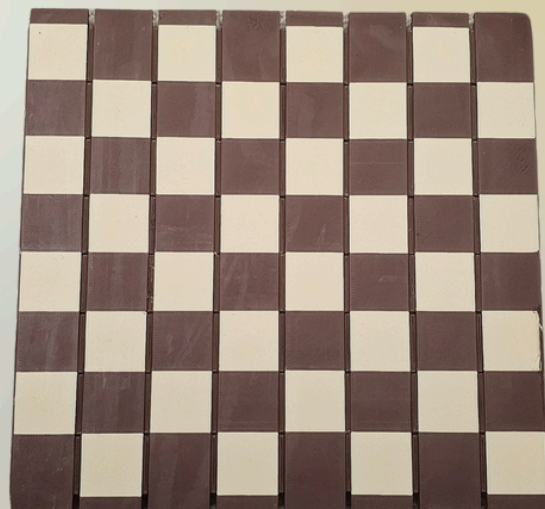
5

Add tiles to the chess board
(32 of each color)



Tip: Start with a
light tile in the
bottom right corner

Reference image:



ASSEMBLY INSTRUCTIONS

6

Add side magnets to the chess board. (This is the same for both versions of the board)



Pay attention to polarity!!

Done